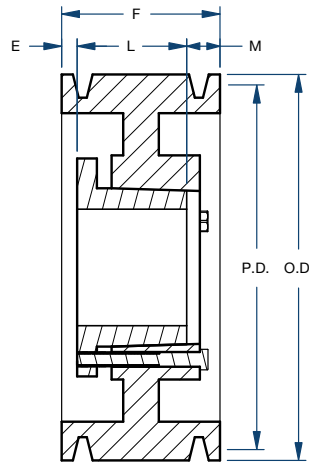


Sheaves

8V SERIES 10 GROOVE/QD



BLACKSTAR®



Type A

Part Number	Bushing	Bore Range	Type	Diameter (in)		Dimensions (in)				Weight less Bushing (lbs)
				Pitch	Outside	E	F	L	M	
10-8V1250J	J	1-1/2 – 4-1/2	A	12.30	12.50	2-1/8	11-5/8	4-5/8	4-7/8	156.0
10-8V1320J	J	1-1/2 – 4-1/2	A	13.00	13.20	2-1/8	11-5/8	4-5/8	4-7/8	190.0
10-8V1400J	J	1-1/2 – 4-1/2	A	13.80	14.00	2-1/8	11-5/8	4-5/8	4-7/8	210.0
10-8V1500M	M	2 – 5-1/2	A	14.80	15.00	2-11/32	11-5/8	6-3/4	2-17/32	266.0
10-8V1600M	M	2 – 5-1/2	A	15.80	16.00	2-11/32	11-5/8	6-3/4	2-17/32	256.0
10-8V1700M	M	2 – 5-1/2	A	16.80	17.00	2-11/32	11-5/8	6-3/4	2-17/32	281.0
10-8V1800M	M	2 – 5-1/2	A	17.80	18.00	2-11/32	11-5/8	6-3/4	2-17/32	290.0
10-8V1900M	M	2 – 5-1/2	A	18.80	19.00	2-11/32	11-5/8	6-3/4	2-17/32	301.0
10-8V2000M	M	2 – 5-1/2	A	19.80	20.00	2-11/32	11-5/8	6-3/4	2-17/32	325.0
10-8V2120M	M	2 – 5-1/2	A	21.00	21.20	2-11/32	11-5/8	6-3/4	2-17/32	340.0
10-8V2240N	N	2-7/16 – 5-7/8	A	22.20	22.40	3/16	11-5/8	8-1/8	3-5/16	365.0
10-8V2480N	N	2-7/16 – 5-7/8	A	24.60	24.80	3/16	11-5/8	8-1/8	3-5/16	390.0
10-8V3000N	N	2-7/16 – 5-7/8	A	29.80	30.00	3/16	11-5/8	8-1/8	3-5/16	435.0
10-8V3550P	P	2-15/16 – 7	A	35.30	35.50	1/4	11-5/8	9-3/8	2	507.0
10-8V4000P	P	2-15/16 – 7	A	39.80	40.00	1/4	11-5/8	9-3/8	2	615.0
10-8V4450P	P	2-15/16 – 7	A	44.30	44.50	1/4	11-5/8	9-3/8	2	710.0
10-8V5300P	P	2-15/16 – 7	A	52.80	53.00	1/4	11-5/8	9-3/8	2	945.0